

FAIR ACCESS

FOR WESTERN MONTGOMERY COUNTY

High School and New Gym Completion
Community Center Construction
Cover Swimming Pool
Continued Funding for WUMCO Healthcare
Funding the Performing Arts Center

Poolesville Day Breakfast

SEPTEMBER 21, 2024

Mission of the Fair Access Committee

Created by the Town of Poolesville

Mission as stated in the Town Code:

“Actively engage county and state representatives to promote fair access to facilities and services provided elsewhere in the county.”

In short, to **treat our area fairly**

The “Idyllic” Ag Reserve is An “Oasis”



LOCAL OPINIONS

Opinion | Montgomery's Agricultural Reserve has a dark side

By Link Hoewing, Chuck Copeland and Kevin Schramm

August 30, 2019 at 4:45 p.m. EDT



Key Factors Contributing to Inequity

1

Distance

2

Isolation

3

Hidden Need

4

Lack of Population

Hidden Needs

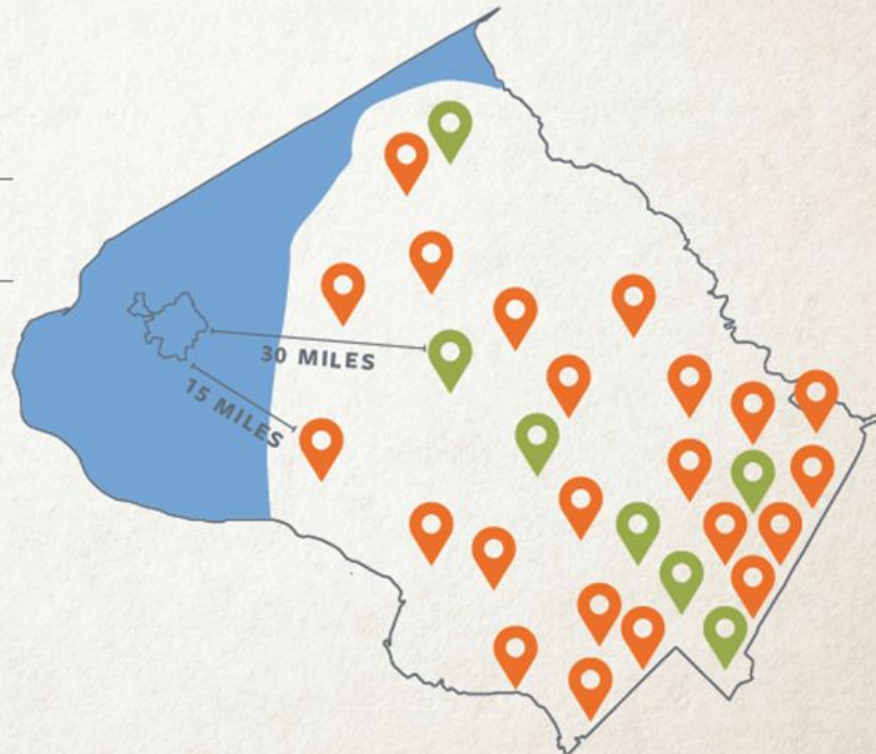


Distance



Community and Senior Centers in Montgomery County

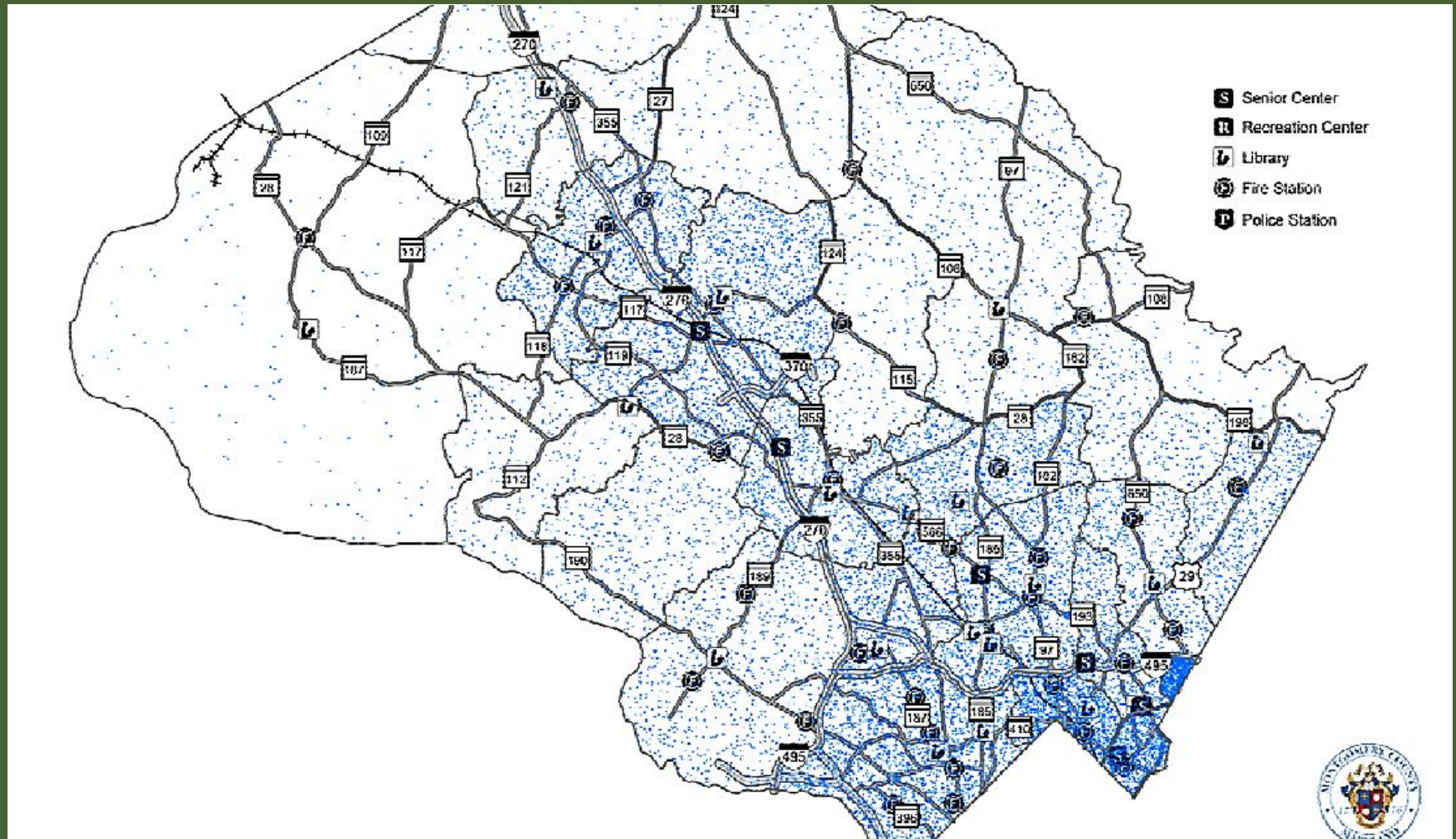
-  RECREATION/COMMUNITY CENTERS
-  SENIOR CENTERS
-  AG RESERVE



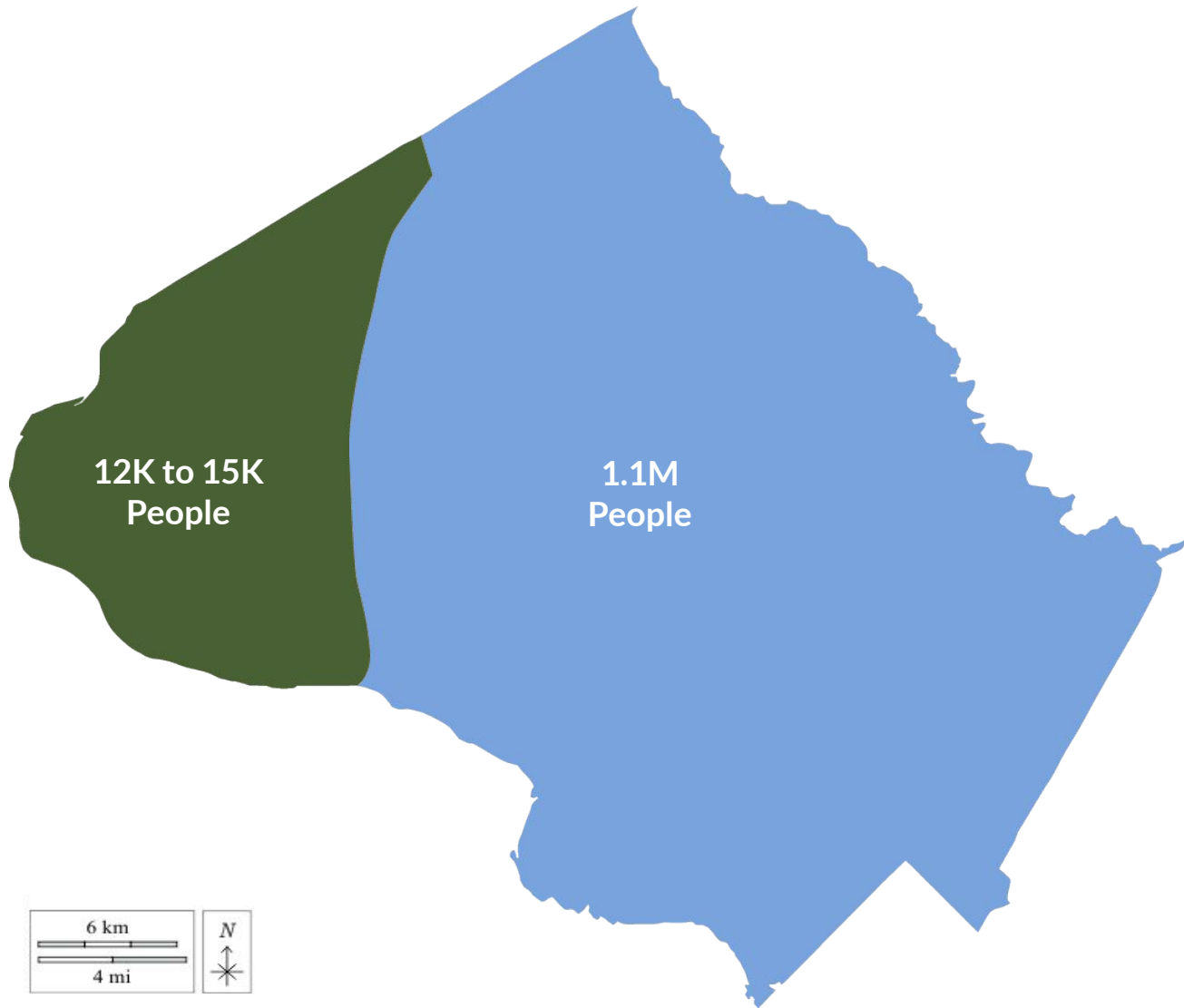
Source: <https://www.montgomerycountymd.gov/gis/maps/gallery.html>

Isolation

Montgomery County Seniors Population — Every Dot Equals Six People



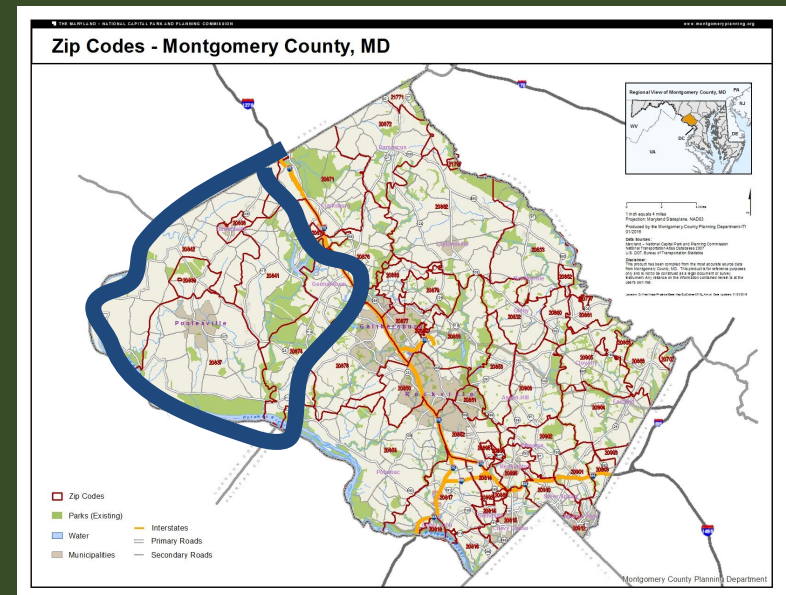
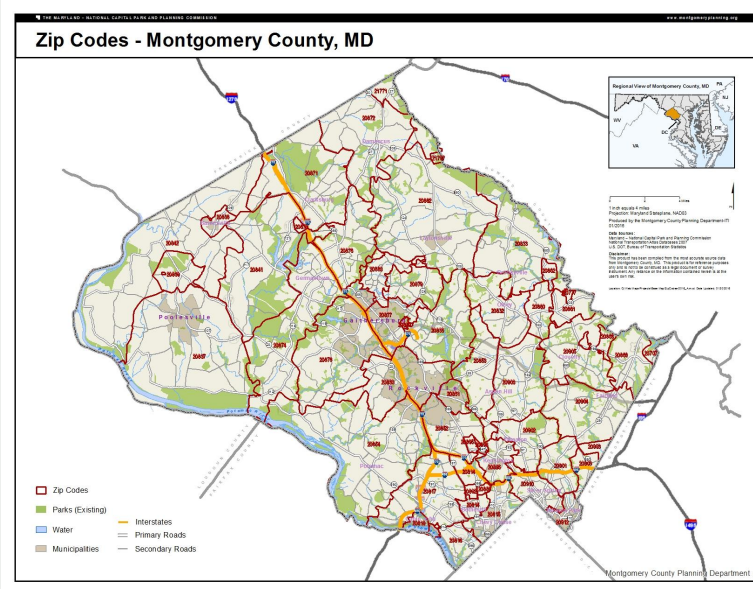
Lack of Population



Personal Care Physicians Per Capita

1:730

1:7000



County Health Zip Code Study

Results — Overall Rank

Top 5 Zip Codes

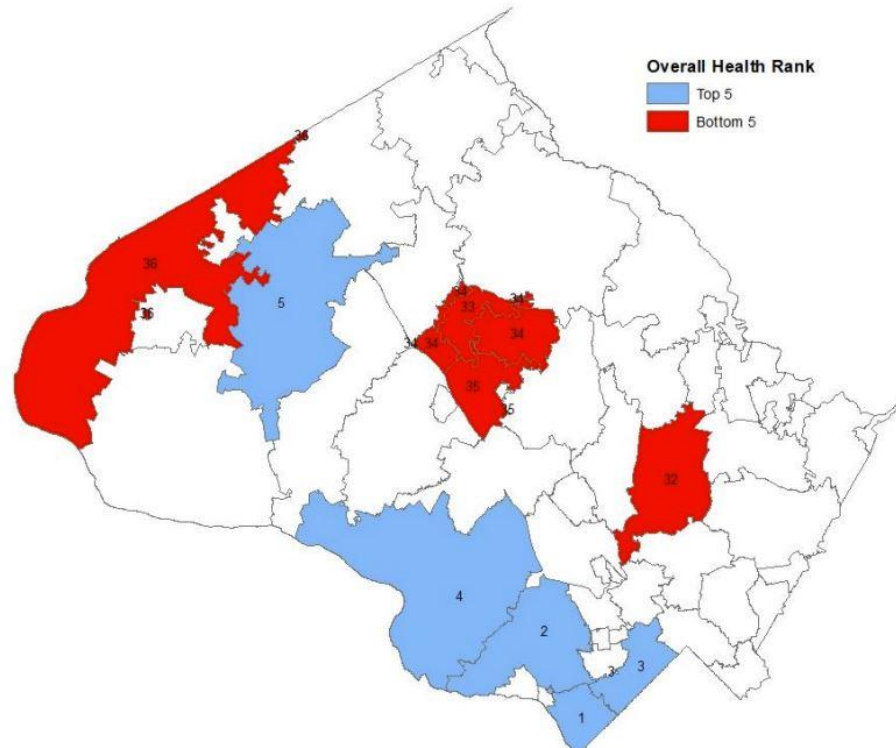
1. 20816 - Bethesda
2. 20817 - West Bethesda
3. 20815 - Chevy Chase
4. 20854 - Potomac
5. 20841 - Boyds

Bottom 5 Zip Codes

32. 20906 - Aspen Hill
33. 20886 - Montgomery Village
34. 20879 - Gaithersburg
35. 20877 - Gaithersburg (Old Town)
36. 20842 - Dickerson

Overall Health Rank

- Top 5
- Bottom 5



Poolesville Had a County Clinic – Closed in 1989

The Washington Post

Democracy Dies in Darkness

December 12, 1989

Beginning today, Montgomery County's Manna Food Center will distribute butter, flour, corn meal, peanut butter, canned cooked pork and honey to needy persons.

Sites for distribution include:

Poolesville Health Clinic

Partnership and Progress



Partnership and Progress



Partnership and Progress



A New PHS, A Great Start Towards True Equity



Numerous Examples of Inequity Remain

- Summer School lunches – Clarksburg Closest Site
- Mental Health and Tutoring Services
- Lack of Recreation Programs
 - Why Not Sponsor Some in Existing Facilities?
- Enhanced Public Transportation for Medical Visits and Seniors to Take Advantage of Programs Here and Down County

The Hub and Spoke Economy



**New School & Gym
Completion**

Community Center

Clinic Space

Year Round Pool

Performing Arts Center



Reopen Whites Ferry



Courtesy: The Washington Post

Reopen Whites Ferry

Devastating Closure Impacts

- 10 million extra miles driven since the Ferry closed in December 2020
- Area businesses experienced a 20 percent drop in revenues
- Whites Ferry study:
 - Forecasts a 48 percent increase in social-recreational trips by 2040 if reopened—many of these trips are to the C&O Canal which generate tens of millions of tourist dollars for MoCo annually
 - Estimates the reopening to generate +\$9 million in economic impact in 2023 and +\$24 million by 2040 (annually)

Reopen Whites Ferry



The Washington Post
Democracy Dies in Darkness

Opinion | Get White's Ferry going again

🔗 📄 🗨️ 11



The White's Ferry landing in Poolesville in December 2021. (Katherine Frey/The Washington Post)

By Letters to the Editor
January 4, 2023 at 2:08 p.m. EST

For two years, White's Ferry has been closed because of a contract dispute between the two parties involved in the ferry's operation. On May 7, 2021, The Post opined on the closure and said that the two counties involved should "shape a solution that gets the ferry running and safeguards it from future interruption." On Dec. 29, hundreds of

Key Issues for Fair Access

Complete Poolesville High School Reconstruction

Reopen and Improve White's Ferry

Protect Funding for Community Center and Speed Up Construction Date

Make Public Transportation Work for the Western County

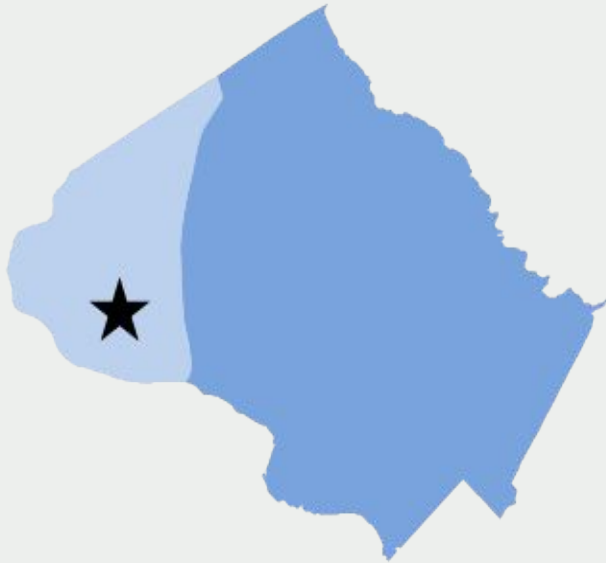
Cover Pool for Year-Round Use

Support of a Performing Arts Center in Poolesville

Understanding and Improving the Economy of the Western County

Support Continued Funding for the WUMCO Health Care Initiative

Thank you for your partnership!



FAIR ACCESS

FOR WESTERN MONTGOMERY COUNTY

Finish High School and New Gym
Speed Up Community Center Construction
Cover Swimming Pool
Continued Funding for WUMCO Healthcare
Funding for Arts and Performing Arts Center