

# Healthcare Needs in Western Upper Montgomery County

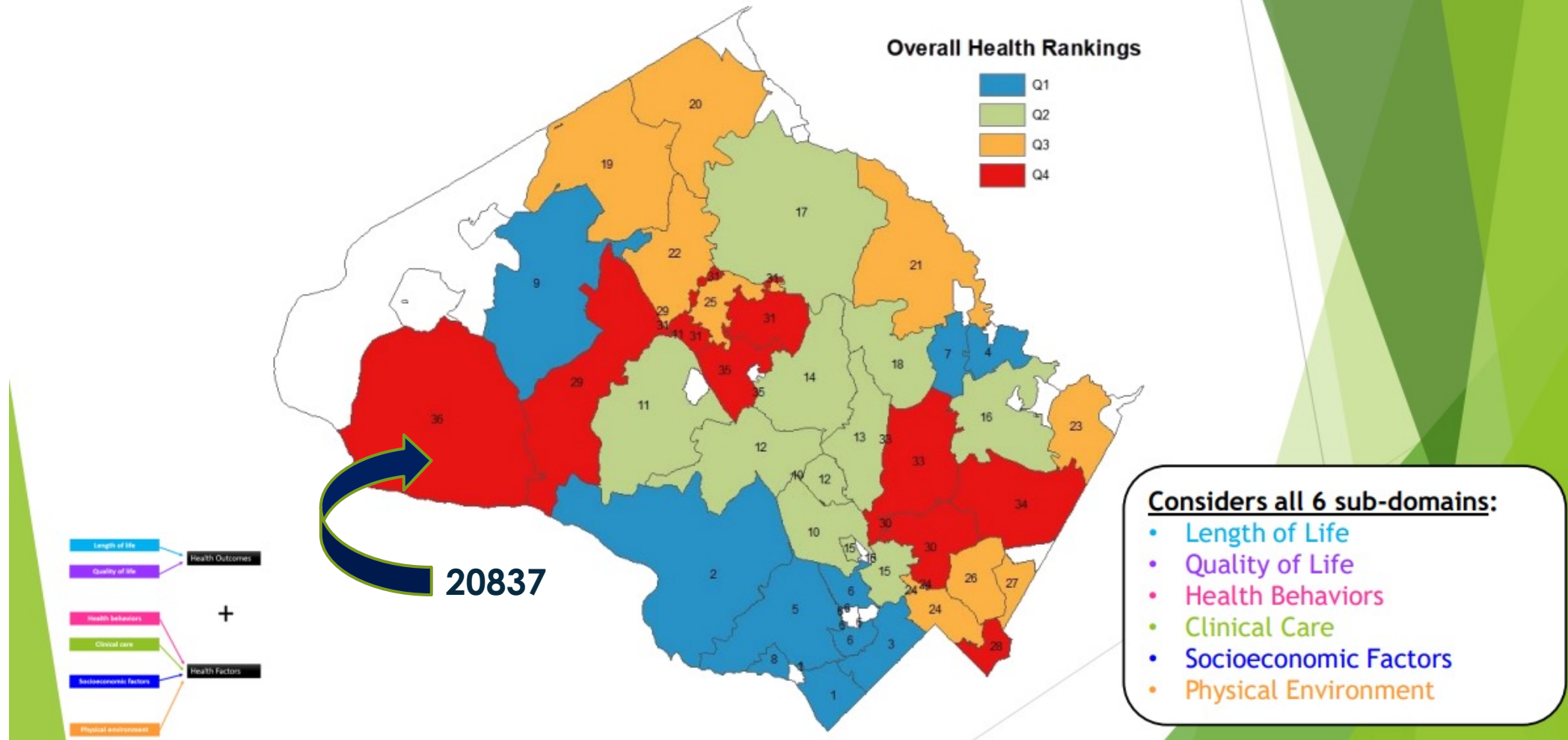
MELISSA WIDENHOFER,  
COMMUNITY HEALTH MANGER  
WUMCO HELP

**WUMCO**  
*Help, Inc.*



**Western  
Upper  
Montgomery  
CO**unty

# Results — Overall Rank

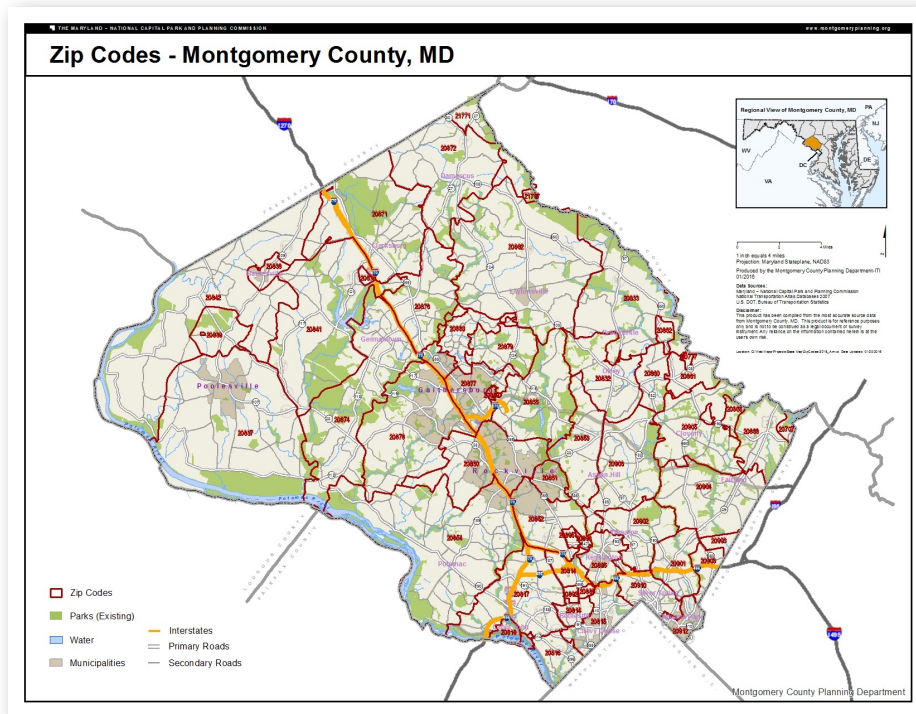


# WHY?

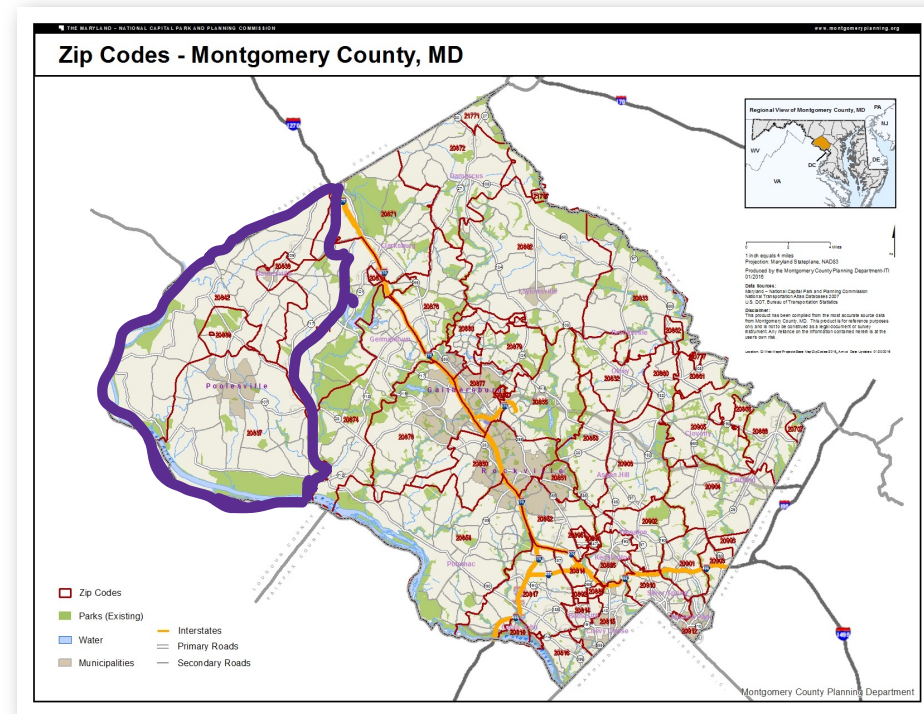
- ▶ Under 75 mortality rate 36/36
- ▶ Years of productive life lost 36/36
- ▶ After-hours hospitalization rate 36/36
- ▶ Inpatient and ER hospitalization rate 34/36
- ▶ Mental health hospitalization rate 35/36

# PCPs Per Capita

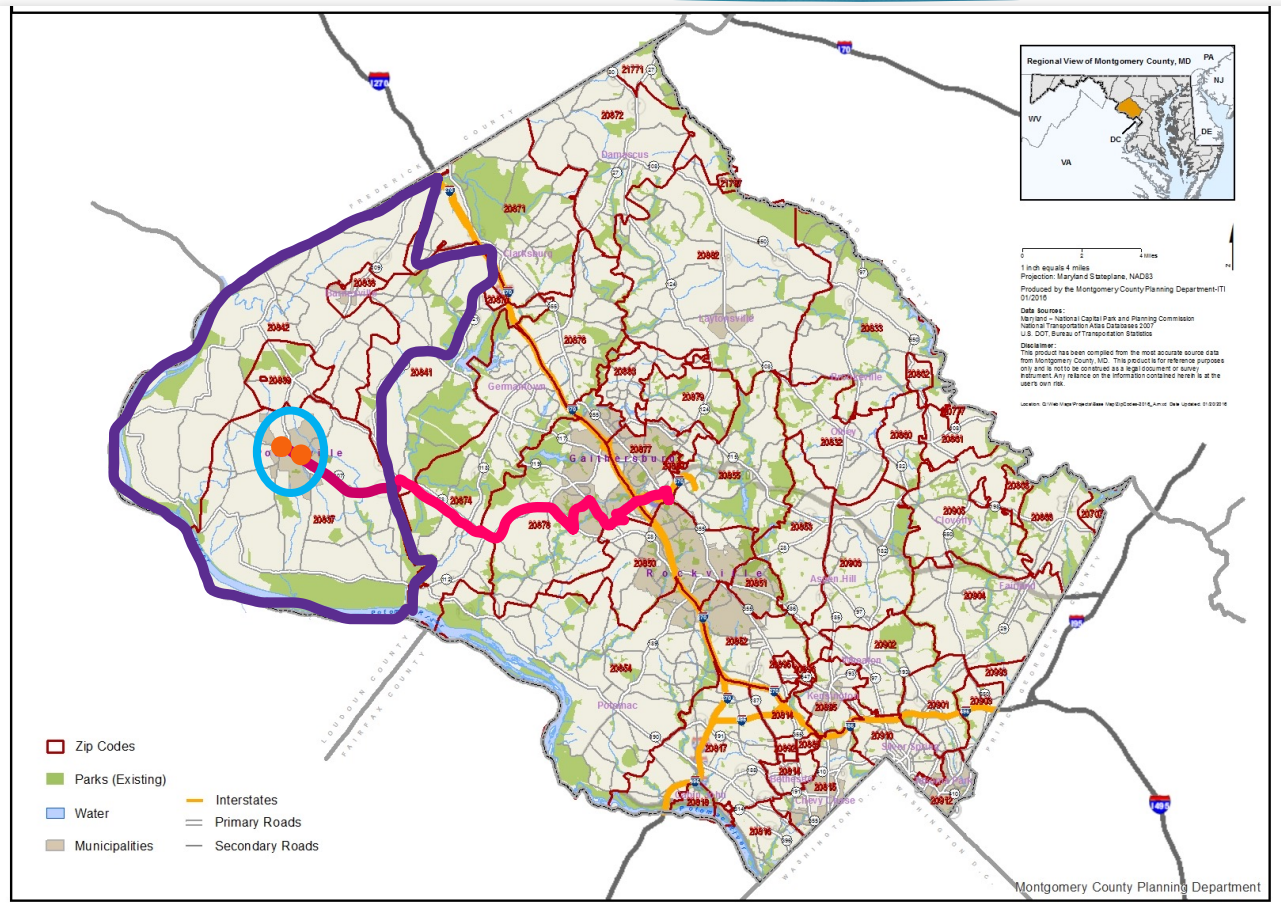
1:730







1:7000



# Ride On Route 76



-  WUMCO service area
-  Bus Route
-  Bus Stops
-  Metro Access service area

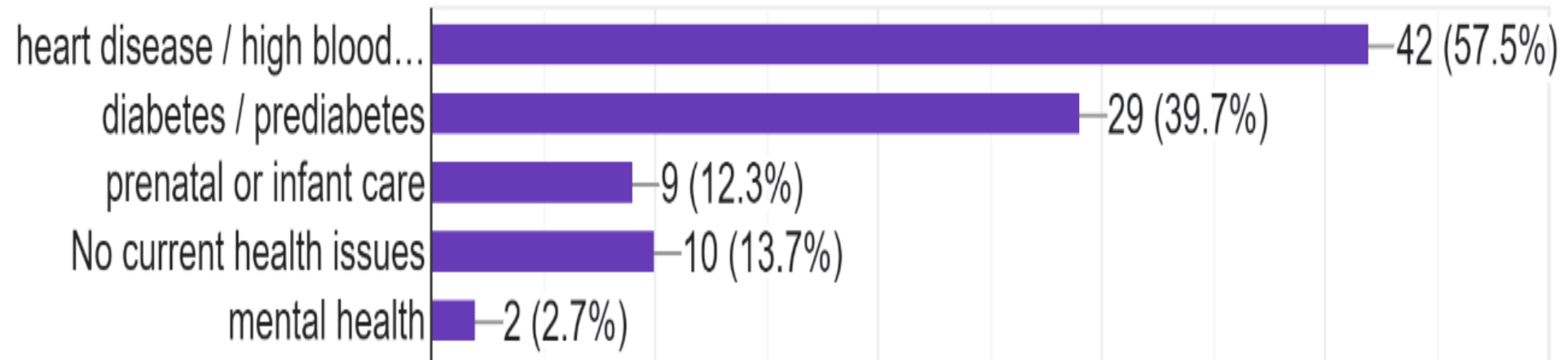
# Phone Survey of WUMCO Clients



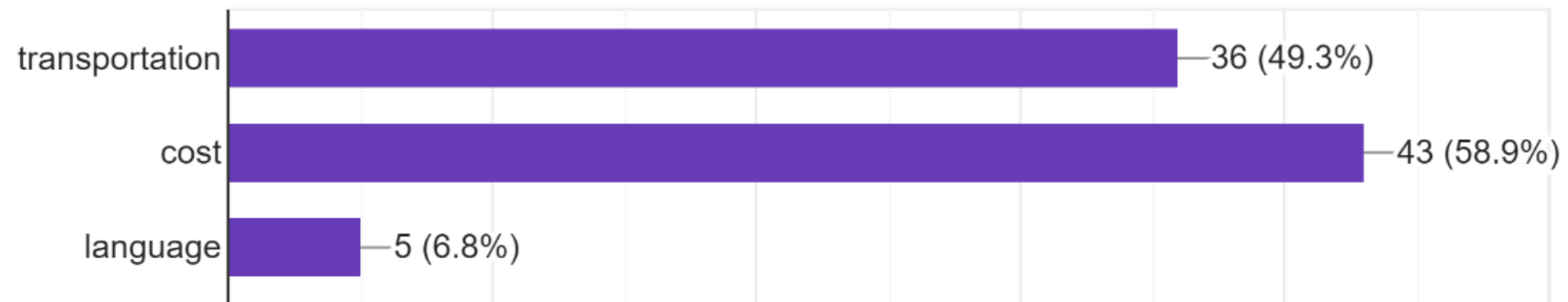
# Which of the following health services would you or your household use?



# Which of the following health issues currently affect you/your household?



Do you or anyone in your household experience any of the following barriers to accessing healthcare services?

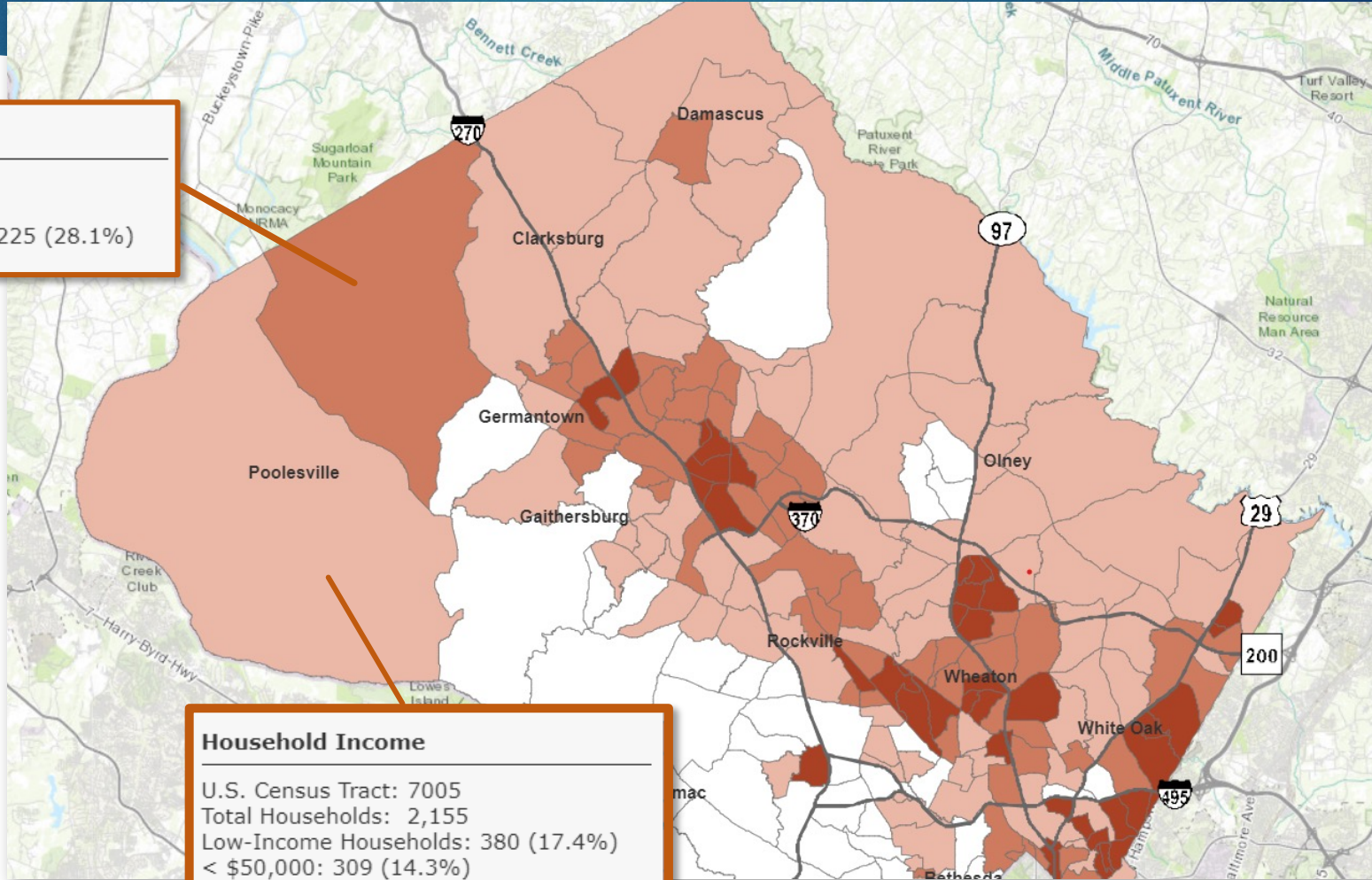


# WUMCO Area Income

**Household Income**

---

U.S. Census Tract: 7004  
Total Households: 795  
Low-Income Households: 225 (28.1%)  
< \$50,000: 187 (23.5%)



**Household Income**

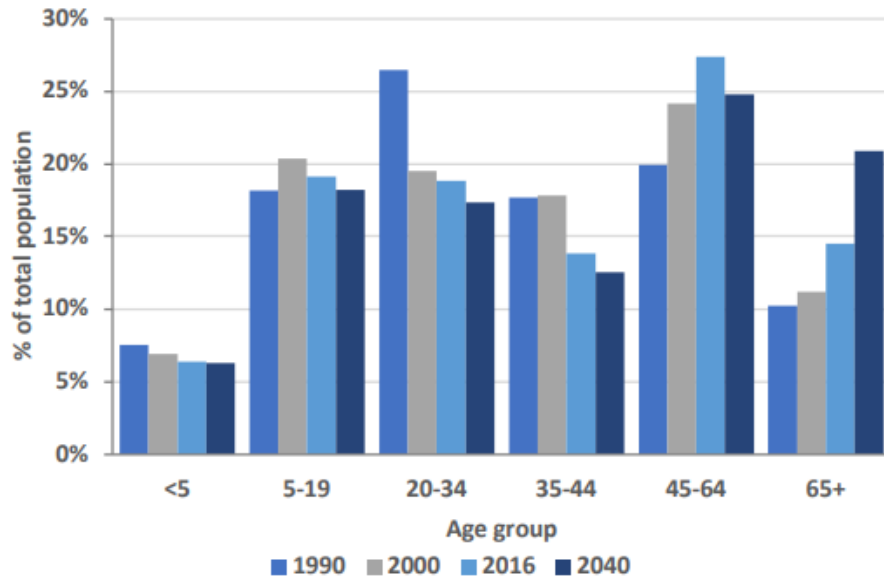
---

U.S. Census Tract: 7005  
Total Households: 2,155  
Low-Income Households: 380 (17.4%)  
< \$50,000: 309 (14.3%)

\*Montgomery County Planning – Equity Focus Map

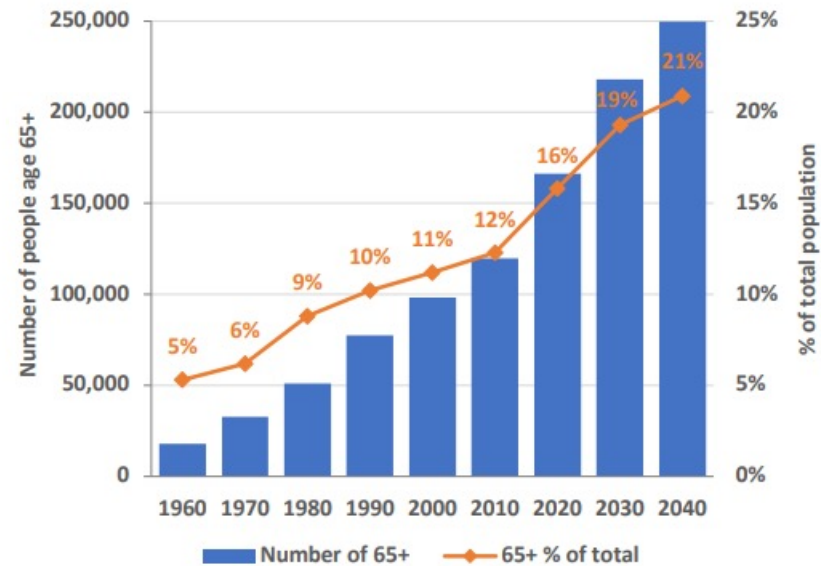
# Our Aging Population

Figure 9. Percentage of Population by Age Group



Source: 1990-2000 Census; 2016 American Community Survey, 1-year estimates, U.S. Census Bureau; Age Forecast, Maryland Department of Planning (2017).

Figure 10. Age 65+ Population, 1960-2040



Source: 1960-2010 Census, U.S. Census Bureau; Population Forecast, Maryland Department of Planning (2017).



# Poolesville Day Health Fair



WUMCO IN PARTNERSHIP WITH  
AMERICAN DIVERSITY GROUP  
PRESENTS

## Poolesville Day Health Fair

Health Screenings  
and Education

- ✓ School Bags Giveaways
- ✓ Blood Pressure Check
- ✓ Blood Glucose Check
- ✓ Flu Vaccination

 September 17, 2022

 11 AM to 4 PM

 Poolesville Town Hall  
19721 Beall St, Poolesville MD

WUMCO  
*Help, Inc.*



# Going forward...

## Goals:

- ▶ Identify priority resources
- ▶ Identify most effective delivery methods
- ▶ Provide data to support our findings

## Possible solutions:

- ▶ Designated clinic space
- ▶ Staffed regular clinics
- ▶ Transportation options
- ▶ Mobile dental
- ▶ Community center

HAVE A GREAT  
POOLESVILLE DAY!

WUMCO

*Help, Inc.*

